

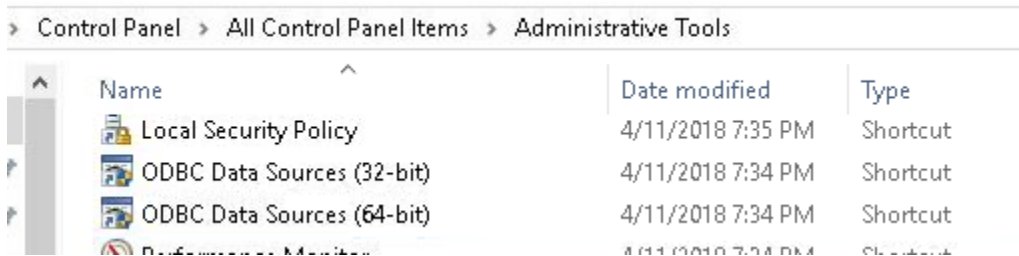
PVRM – Bag Program Changing ODBC DSN.

DRN 4/4/2019

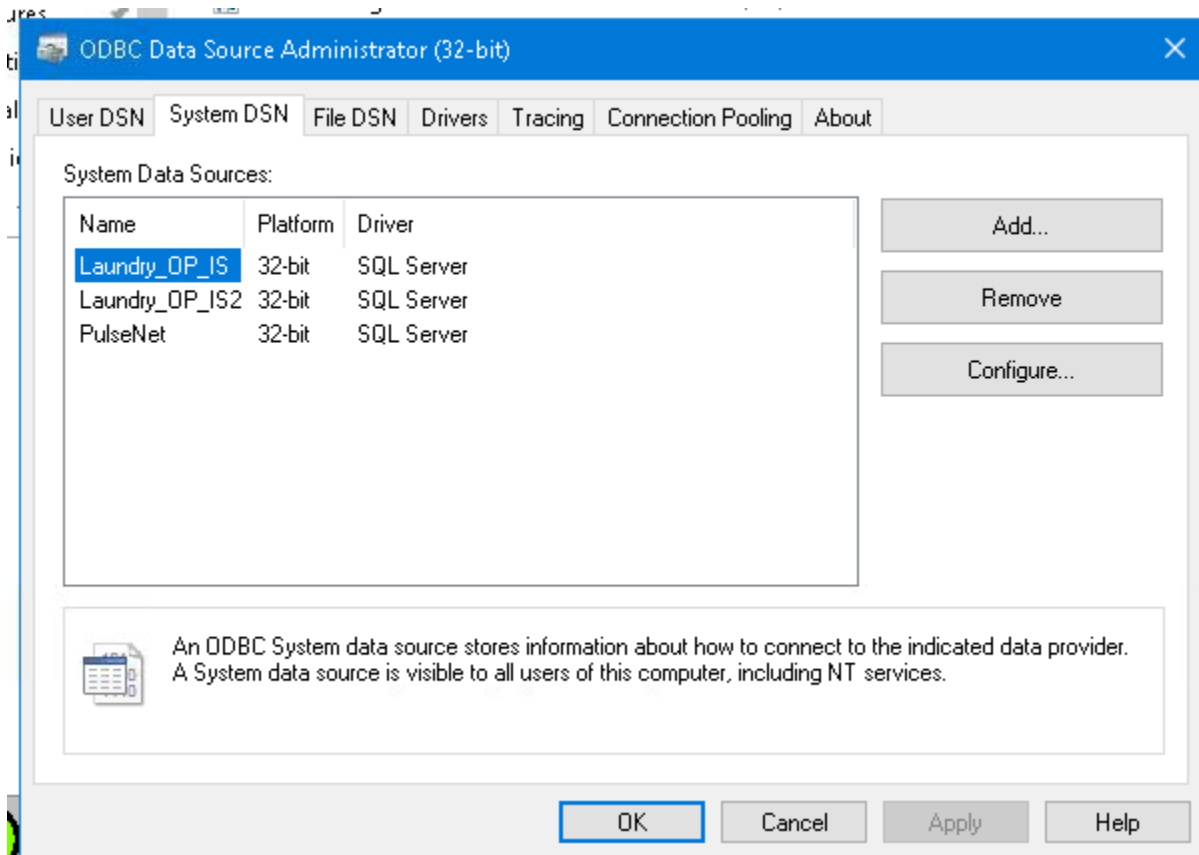
Basic Notes:

- 1) Only change DSN's that use a dotted address for the server. Example below.
- 2) The only change is the server address, and the new IP address would be the LIFT1 PC
- 3) Then it is just click through and test.
- 4) This needs to be done on all PC's normally there is a LIFT1 , and Call Off PC. In some plants there may be a LIFT2 PC.

The windows tool for this is "ODBC Data Sources" both 32 bit and 64 bit. There may not be 64 bit DSN's.

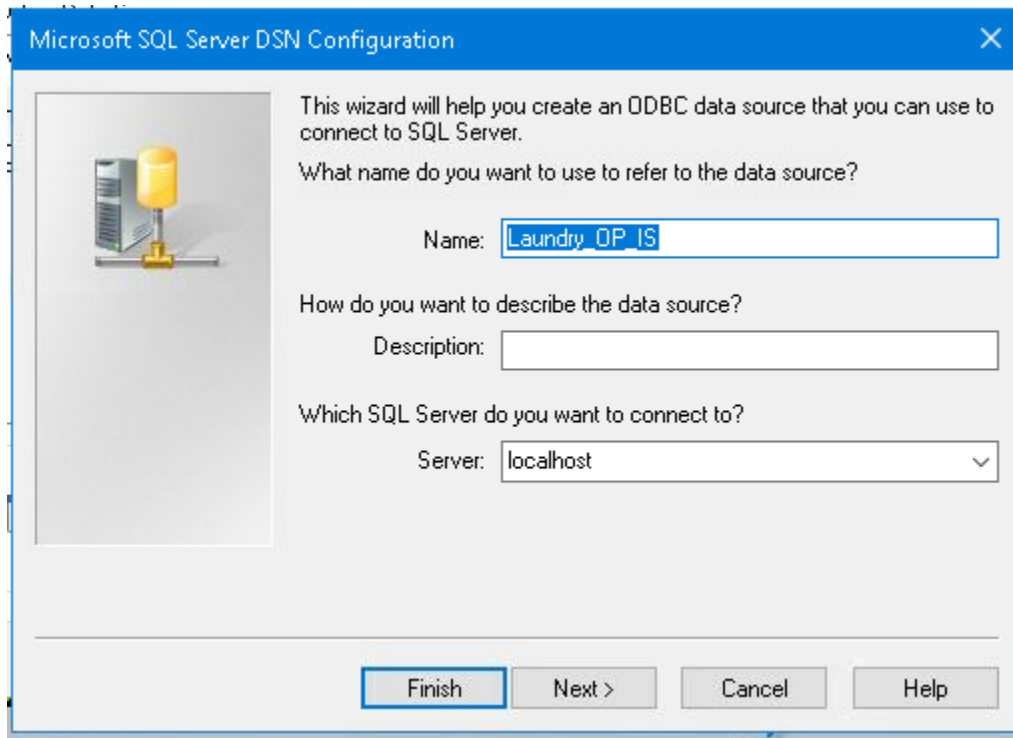


Below is an example list of DSN's. All need to be checked on each PC.



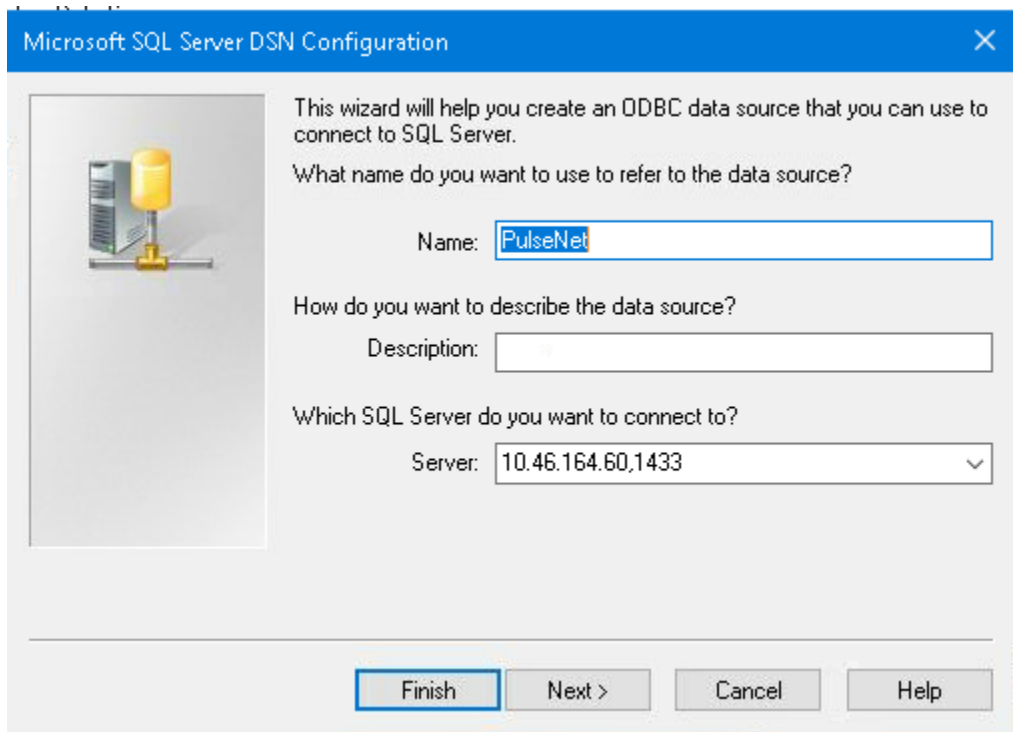
NOTICE: the "Server:" entry is not a dotted address. NO changes are needed to this DSN.

Just cancel out of this DSN setup



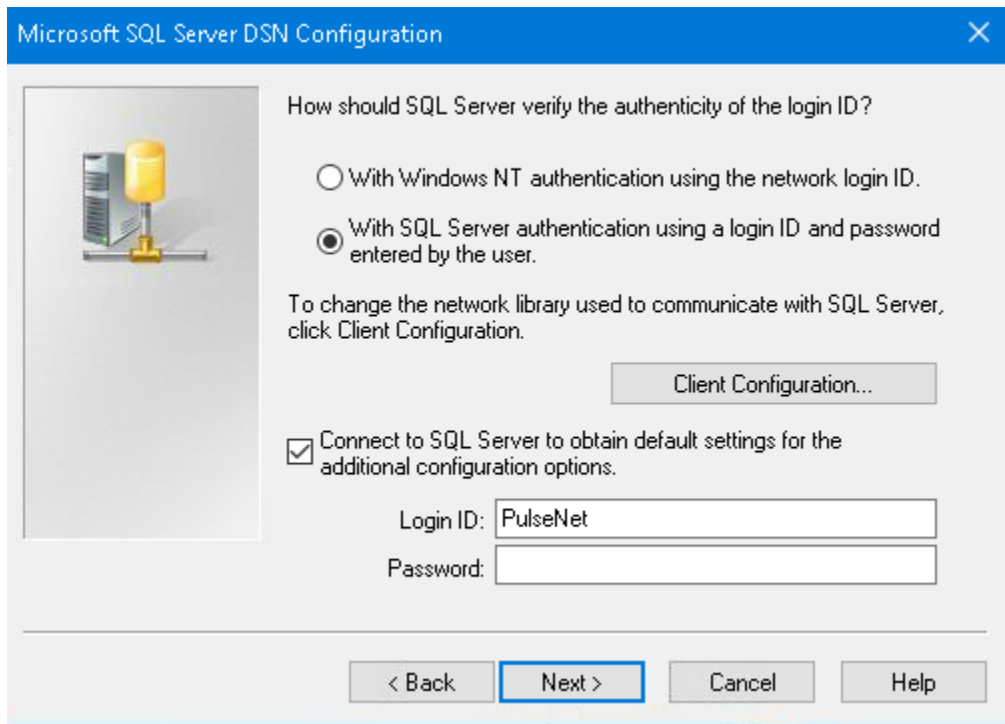
The DSN below needs to be changed:

Just the IP address needs to be changed. The ,1433 is a port and needs to be included with the new address. The new address would be the IP address of the LIFT1 PC.



Login to the DB Server.

The password should be the same as the user id. This is case sensitive.

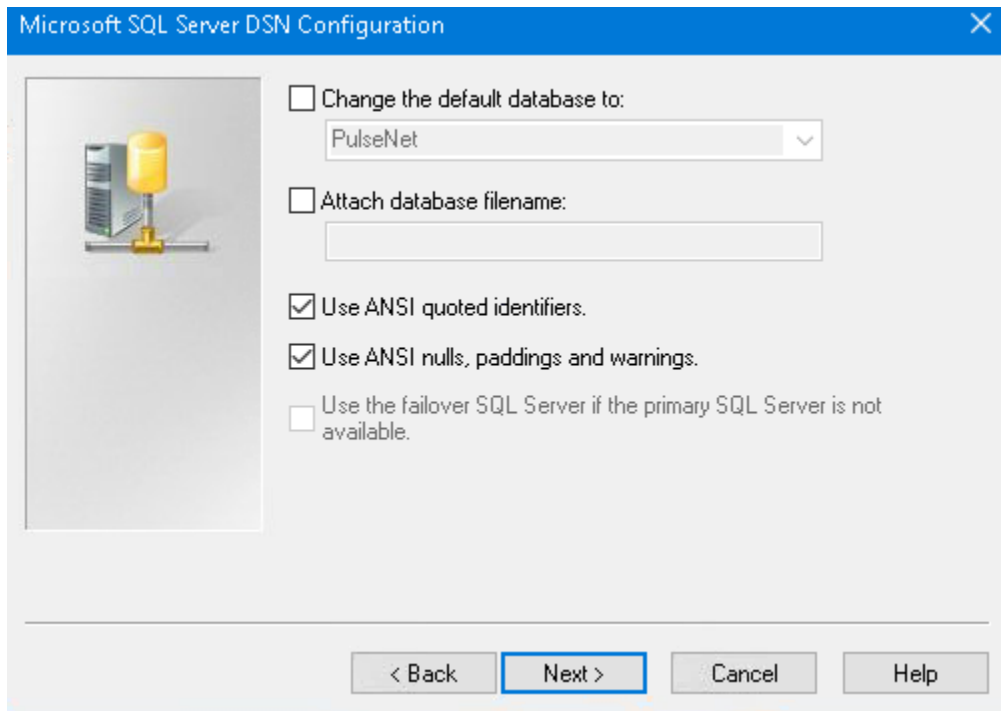


The screenshot shows the 'Microsoft SQL Server DSN Configuration' dialog box. The title bar is blue with a close button. On the left is a 3D icon of a server tower and a yellow cylinder. The main area contains the following text and controls:

- Question: "How should SQL Server verify the authenticity of the login ID?"
- Two radio buttons:
 - With Windows NT authentication using the network login ID.
 - With SQL Server authentication using a login ID and password entered by the user.
- Text: "To change the network library used to communicate with SQL Server, click Client Configuration."
- Button: "Client Configuration..."
- Checked checkbox: "Connect to SQL Server to obtain default settings for the additional configuration options."
- Text: "Login ID:" followed by a text box containing "PulseNet".
- Text: "Password:" followed by an empty text box.
- Bottom navigation: "< Back", "Next >" (highlighted with a blue border), "Cancel", and "Help".

Click through the next screen

The DSN name and the default DB should be the same. There is no changes expected on this screen.

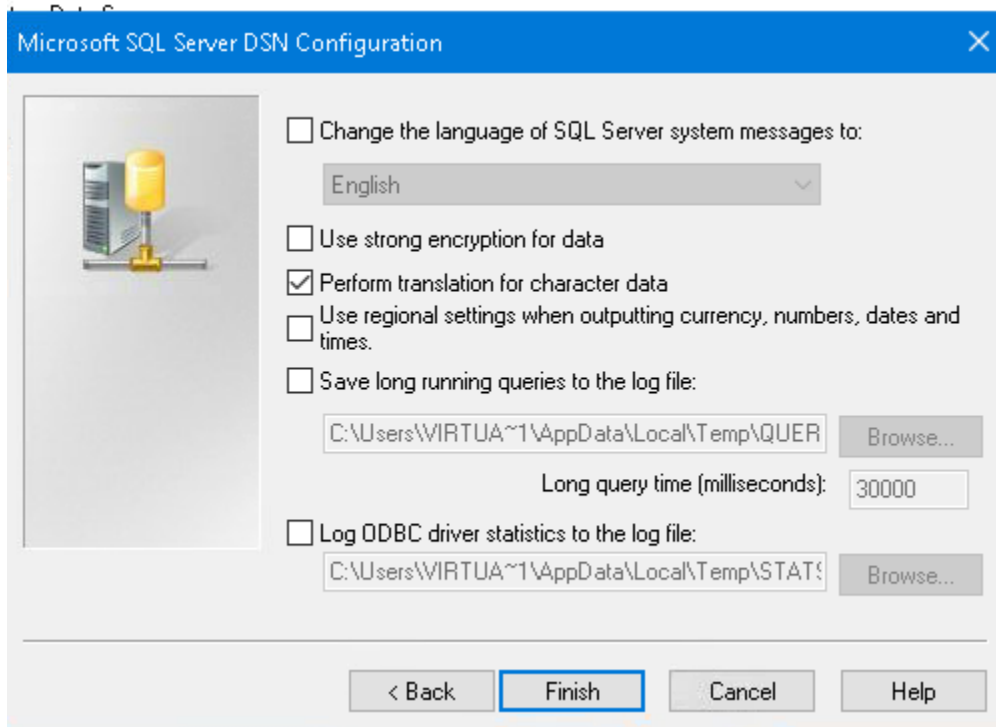


The screenshot shows the 'Microsoft SQL Server DSN Configuration' dialog box, Step 2. The title bar is blue with a close button. On the left is the same 3D icon as in the previous screenshot. The main area contains the following text and controls:

- Unchecked checkbox: "Change the default database to:" followed by a dropdown menu showing "PulseNet".
- Unchecked checkbox: "Attach database filename:" followed by an empty text box.
- Checked checkbox: "Use ANSI quoted identifiers."
- Checked checkbox: "Use ANSI nulls, paddings and warnings."
- Unchecked checkbox: "Use the failover SQL Server if the primary SQL Server is not available."
- Bottom navigation: "< Back", "Next >" (highlighted with a blue border), "Cancel", and "Help".

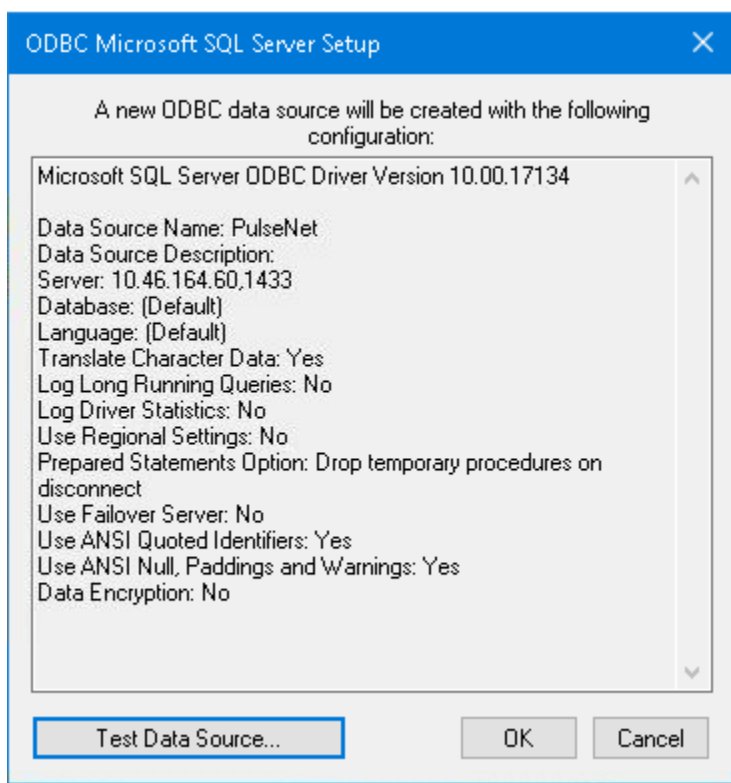
Next Screen: No action needed

Just click on **Finish**:



Test the connection:

Click on "Test Data Source"



It should say "TESTS COMPLETED SUCCESSFULLY!"

